



WEST LEEDERVILLE
PRIMARY

ANZAC Service



Pictured above, the WLPS Ensemble perform at the ANZAC service.

At West Leederville Primary School the ANZAC service is a formal occasion where we come together as a school and community to pay our respects to those brave soldiers who gave up their lives on the beaches of Gallipoli, and in doing so, created the legend of the ANZAC spirit- the legend of strength, courage and mateship. As ANZAC day fell before the students returned to school, our service was scheduled for Tuesday, 1st May.

In response to our request for flowers and foliage to be brought in by the students, we received many donations and our volunteer parents constructed some beautiful wreaths for the students chosen to represent each class to lay during the service.

Year 6 Student Councillors Charlie Dawson and Aisling Knowles were the comperes for the service. In attendance were our special invited guests, Mr Sean L'Estrange MLA, Member for Churchlands; Mr Alan Wilson, Secretary of the Cambridge Returned Services League; Mr Andrew Porter, School Board Chair; Mrs Julie Metcalf, President of the P&C, and Mr Ross Hume from the Police Pipe Band, who played the bagpipes during the service.

We extend our gratitude to all those who attended the service, our special guests and in particular to those parents who constructed the wreaths for our students.



Keeley from Year 6, dressed in his scout uniform, assists some junior students to lay their wreath.

From the Principal



Dear WLPS Community,

Welcome back!

I hope you all had a wonderful school holiday. We really could not have asked for better weather for our children and teachers to relax and rejuvenate, ready to hit the ground running for an action packed Term 2.

New staff members

This week we had two new staff members commence work at our school. Mrs Lynne Drysdale is teaching Year 1 Black for the rest of this year, taking over from Miss Jade Mulgrew (baby due very soon) and Mrs Kristie Downing replacing Mrs Jo Shepherd (who gave birth to baby Mia on Monday) teaching fundamental movement skills to our early years students. We would like to welcome them to the team. Please say hello when you see them around the school.



Mrs Kristie Downing



Mrs Lynne Downing

Professional learning

At West Leederville Primary School our whole school approach to the teaching of spelling is based on the program Words Their Way. On Tuesday after school our teachers participated in a workshop conducted by Chris Killey an expert in the delivery of this approach. Chris presented a highly entertaining and informative session highlighting the benefits of students understanding why words sound and are written the way they are. This includes understanding their origins and the rules and strategies used in the English language.

Did you know that no British/ English word can end with the letter i? The letter y takes it's place. Knowing and understanding this strategy can help with the spelling of over 1000 words.

mi my

• 1,000's of words

The letter **i** has two sounds /i/ and /i:/. The letter **i** cannot end an English word and the letter **y** takes its place. **y** may say /i/ or /i:/. **y** is considered the vowel sound in the word.

The letters **i**, **j**, **v** and **u** cannot end English words. e.g. **i** **j** **v** **u**

Words that end in **i** are derived from other languages.

e.g. macaroni - Italian
ski - Norwegian
hi - is short for hello

The letter **i** has two sounds. When reading the letter **i**, try the /i:/, if it doesn't make sense try the second sound /i/.

The letter **i**, was at a party, and was being silly. The other letters were not happy. They said to **i**: "You are being silly and not making us happy. You are no longer allowed at the end of English words". The letter **y** came to the rescue and said:
"I am not at the start of many words and I will make you happy and say /i/ and /i:/ at the end of English words".

House and grounds

We are finally coming to the end of the construction works here at school. The defects list for the upstairs classrooms is nearly complete and when the gardeners' shed is finished in about three weeks time, we will be construction free. Won't that be WONDERFUL?

This year our lawn has lasted longer than ever before, having usually developed some large dead patches by this time of year. In our efforts to keep it in the best condition possible for sport and play we would like to ask that whenever possible all visitors and users of the school keep to the paths. This will help keep the tracks worn in the common use (corner cutting) areas to a minimum. It may take a few seconds longer to go the long way but it is for a good cause and we'd really appreciate everyone trying to help us with this.

Warm regards,

Fiona Kelly

Eco-friendly garden



The Year 5 students who teamed up to create the Eco-friendly garden on the Woolwich St side of the school.

Have you noticed the new Eco-friendly sustainable garden? Throughout Term 1, two groups of students from Year 5 Blue and Year 5 Red class participated in planting a garden. We all paired up and studied a different subject which included the movement of the sun by Issy and Lily, and Jasper and Fred researched suitable plants for sandy soil.

A consultant botanist named Sarah came in to help us decide on our final selection of plants. We measured width and height then we calculated the area of the garden bed, so we knew how many plants would fit comfortably in that space.

We prepared the soil with Weta soil, then the group from Miss Pallas' class planted the Pig face and everlasting seeds. Following this, we spread the eco-friendly mulch made by WA farmers around the whole garden.

We hope you like the new garden and appreciate all the effort we put in. Please take care not to step on the plants.

by Jasper and Issy, Year 5



Dates for your Diary

4 May

Excursion- Sci Tech, Year 5.

8 to 11 May

National NAPLAN testing, Years 3 & 5.

10 May

Excursion- visit Duyfken, Fremantle, Year 4.

11 May

Mothers day morning tea - PP Blue, 9am & PP White 2pm

11 May

Interschool sport - Wembley Downs PS, 1.30pm

15 & 18 May

Kindergarten photo day.

15 to 25 May

NAPLAN testing, Years 3 & 5

18 May

Walk safely to School Day, breakfast from 8.15am

23 May

National Simultaneous Reading Day, 11am

24 May

Assembly- Yr 4 Blue, Undercover area, 2.15pm

25 May

Excursion- TOC Arbor Day, Year 3 White.

25 May

Interschool sport - City Beach PS, 1.30pm

31 May

PL Day, students do not attend school

1 June

PL Day, students do not attend school

4 June

Western Australia Public Holiday, students do not attend school

Please check the West Leederville Primary School Website or Mobile App for regular updates to the school planner.

Easter colour



For many years, students from WLPS have been invited to enter an Easter colouring in contest, sponsored by the Subiaco Square Newsagency. Entries were received from many of the local schools and this year one of our students in Pre-primary White was a winning entry. Alexandra received a fluffy rainbow coloured rabbit as her prize.

2019 Kindergarten applications

In Western Australia, children can start their education in Kindergarten, however compulsory schooling starts the following year in Pre-primary. Friday 20 July 2018 is an important date in your child's education.

Who needs to enrol?

You need to apply to enrol your children in school for 2019 if they are:

- starting Kindergarten – 4 years old by 30 June 2019
- starting Pre-primary, the first year of compulsory school – 5 years old by 30 June 2019
- starting Year 7, the first year of secondary school
- changing schools.

Currently we are accepting [Applications for enrolment](#) forms for our 2019 kindergarten program, which are available on our website.

We will contact our current kindergarten students regarding enrolling for the 2019 Pre-primary year later this term. Families wishing to enrol new students for Pre-primary next year should submit an general admission [application form](#) from the website.

Every child from Pre-primary to Year 12 is guaranteed a place at their local public school.

Applications close Friday 20 July 2018.

SEDA football

During Term 1 our students were fortunate enough to have Year 11 and 12 students from the SEDA Dockers program come in during their Phys Ed classes to coach them through ball skill sessions. Students participated in drills to fine tune their catching, handballing, kicking and movement skills. The Dockers SEDA program is overseen by a former teacher at WLPS, Mr Brent Snook. The WLPS students thoroughly enjoyed interacting with the older students and enhancing their ball skills.



Volunteer parents



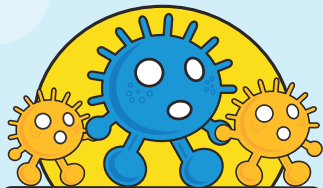
Pictured above, Aimee, Jill, Janey, Marcie, Donna and Kath who created the beautiful wreaths for the ANZAC service.

Parent volunteers offer a huge resource and support base for the WLPS students and staff. Volunteering at school is a great way to show your children that you take an interest in their education; it sends a positive message that you consider school a worthwhile cause, and shows the importance of participating in the larger community.

This week we would like to acknowledge the parents pictured above, who answered our call for assistance to construct twenty-five wreaths to be laid at our ANZAC service. This type of hands-on contribution is highly valued and provides learning opportunities and experiences for the students that would not be available otherwise.

Walk, Ride, Scoot Safely to School Day

**ACTIVE KIDS ARE
SMARTER KIDS**



**WALK SAFELY
TO SCHOOL DAY**

FRIDAY 18 MAY 2018



**Until they're ten, children must always hold
an adult's hand when crossing the road**

WALK.COM.AU



SUPPORTED BY THE AUSTRALIAN GOVERNMENT AND ALL STATE, TERRITORY AND LOCAL GOVERNMENTS

Well it's that time of year again when our school seriously starts talking about walking! This year Walk Safely to School Day will be on Friday 18th May.

Walk Safely to School Day asks that we all consider our transport habits and try to incorporate more walking as part of a healthy, active way to get around. Although walking all the way to school isn't realistic for many of us, it's quite easy to figure out how you can build a walk into your family's daily routine.

You can teach your child the healthy habit of walking more by:

- Walking with them the whole way to school
- If they get the bus or train, walk past your usual stop and get on at the next stop
- If you have to drive, park the car a few blocks away from the school and walk the rest of the way.

Students may walk, scoot or ride to school and a sausage sizzle will be available for breakfast from approximately 8.15am. Students who bring along their own cup are also welcome to a cup of Milo.

A competition will be held for the best decorated bicycle for students in Years 3, 4, 5 & 6.

For more information, visit www.walk.com.au

STAR STUDENTS

The following students received Merit Certificates at the recent assembly.

Pre-primary

Zara Campbell
Ayush Banerjee
Sakurako Aoyama
Isla Raven
Alexandrea Woods
Elis Samanta

Year 1

Bastian Cianci
Kai Watkins
Louis Joyce
Aiden Ng
Bowie Merenda
Campbell Finch
Clarissa Tejaya
Owen Griffiths

Year 2

Declan Wong

Mackenzie Decent

*Charlie Mazza
Quinn Bandarage
William Shawcross
Jackson Coombe*

Year 3

Dolcie Sliker
William Hayes
Isabel Greenwood
Neve Madigan
Taj Williams
Piper Raby
Mollie Brown

Year 4

Sebastian Metcalf
Oliver Stavreski
Room 10

Year 5

Tyson Gill
Thomas Jarvis

Year 6

Fletcher Stevenson
Katie Owen
Owen Simpson
Lucas Hughes

**Congratulations to our Star
Students.**



From the Front Office Team

SCHOOL VOLUNTARY CONTRIBUTIONS

We would like to extend a big thank you to all those who have paid their voluntary contributions. While the contributions are voluntary, the quality of the teaching and learning program we offer is maximised when all families contribute. Contributions are used to supplement school funding for the purchase of resources across all learning areas and all year levels. If you have not yet paid your fees you may do so by direct deposit (details below), credit card over the phone, or by dropping in at the front office. All contributions are greatly appreciated and payment plans are available. Any queries may be directed to our Corporate Services Manager, Janelle Cosentino on 9381 1655.

Account details for Direct Deposit

Name: West Leederville Primary

School BSB:036044

Account No: 123672

Reference: child's name and VC. (eg: John Smith VC)

NB: The Voluntary Contribution equates to approximately \$1.50 per week per child.

New Student Furniture



This week we took delivery of our long awaited new classroom furniture which has been placed in Rooms 2, 7 and 8. The new student desks are wide and deep, featuring an adjustable height mechanism to cater for the individual student needs. The slide in/ slide out trays are angled at the front to allow for correct leg clearance. The long term plan is to systematically replace all the existing fixed height student desks in the Heritage Building to the new type.



Pictured above, Hamish and Eliza, and right Jack from Year 2 Blue try out the new student desks.

Town of Cambridge Sustainability Survey

The Town of Cambridge is currently developing a Sustainability Strategy and is encouraging residents to complete their survey. The survey can be found at the following link: <https://www.surveymonkey.com/r/TownofCambridgeSustainabilityStrategy>

Sustainability Workshops



Have your say.

We'd like to know what you think about sustainability and how the Town can create a more sustainable future for our community.

The Town of Cambridge is preparing a Sustainability Strategy to address the way the Town manages resources, the environment and community expectations of sustainability.

The Town would like you to have your say and be involved in the development of the strategy. Share your ideas, experiences, opinions and/or concerns with us in person at one of our upcoming Sustainability Workshops.

Interested in having your say?

To get involved, register your interest online at cambridge.wa.gov.au/sustainabilitystrategy and select one of three workshops listed below or email us at sustainability@cambridge.wa.gov.au with the date of the workshop you wish to attend.

We know shaping the future of our Town is thirsty work, light refreshments will be available at each workshop.

Can't make it to a workshop?

Complete the online survey. You can use the QR code below to access the survey. Hard copies of the survey will also be available at the Administration Building, Cambridge Library and the Boulevard Centre. The online survey closes on Friday, 14 May 2018. If you have any questions contact us on 9347 6000 or via sustainability@cambridge.wa.gov.au

Date	Time	Location
Thursday, 12 April 2018	6pm to 7pm	West Leederville Sports Club 78 Cambridge Street, West Leederville (next to the Leederville Town Hall)
Thursday, 19 April 2018	5.30pm to 6.30pm	Cambridge Library 99 The Boulevard, Floreat (near Floreat Forum Shopping Centre)
Thursday, 3 May 2018	6pm to 7pm	State Netball Centre 200 Selby Street, Jolimont (entry at Selby St and Alderbury St traffic lights)



Register to keep up to date and complete online survey at:
cambridge.wa.gov.au/sustainabilitystrategy



From the P&C

Celebration Under the Stars

Oh what a night!

Around 170 parents, staff and former students came together under the big tree to celebrate WLPS's 120th year. The amphitheatre was filled with conversation, laughter and music, a mix that created an incredible atmosphere. Heartfelt thanks from the organising committee to everyone who came along and joined in the spirit of the event.

Derry Simpson and Naomi Wallace, it was a pleasure working with you on this event; what a team.

And how about our DJ? Rupert Smitheringale, you rock! 'Best DJ I've ever heard!' echoed around the dance floor all night long. Thank you to Rupert and Jane Smitheringale for the time and energy you so kindly donated, and for ensuring the dance floor pumped.

It wouldn't be a WLPS event without thanking a Finch. Greg, your carpentry skills shone bright on the night; thank you for supporting my 'vision'.

A small team of parents helped us clean up on Sunday. They selflessly ignored their sore heads and aching feet, making our work so much lighter. Thank you Jarrad Dunning, Mark Lynch, Jo Walker, Michael Pendred, Owen Williams, Clayton Joyce and Iain Wallace.

The event was a huge success in bringing the community together and also as a fundraiser. The amount raised for the P&C was \$4750.

The following companies are acknowledged for their donations and support:

Perth Audio Visual; Party Plus; Crafted Events; Coles West Leederville

Sarah Williams
Fundraising Coordinator