



West Leederville Primary School

Sculpture under the Tree



Pictured above left, **Peacock Amazingness** sculpted by Juliette Cresp in Year 1, and right **Billy Bob Scooter Boy** by Luka & Liloué Farish Luhan in Year 2 & 4.

The West Leederville Primary School Sculpture under the Tree has finally arrived and tonight the sculpture exhibits will be on display in and around our iconic Moreton Bay Fig tree, between 4pm & 7pm. There have been some amazing sculptures made by individual students, families, groups of students and classes using recycled materials. Guest sculptor, Kathy Allam who has exhibited in both Sculpture by the Sea and Sculpture at Bathers Beach, will be present at 6pm to award prizes and talk about the sculptures.

Families are invited to come along and join in this WLPS community event. The P&C have arranged for food, drinks, ice-cream and glow sticks to be on sale. Tickets are still available with details on our website: [Purchase tickets.](#)



Above, **The Long Lifespan of Shelley the Tortoise** by Shelley & Emily Rae, a Year 1 student and her mother, and on the right, **Dangerous Red Plane** by Ashton Hiller in Year 1.

From the Principal



Dear WLPS Community,

Sculptures Under the Tree

I look forward to seeing you all at our Inaugural Sculptures Under the Tree event starting at 4pm this afternoon. The sculptures are amazing, ranging from small carefully created individual pieces to large collaboratively built constructions. Remember to bring the whole family down for dinner from one of the four food vans, to listen to the guest speaker Kathy Allam and to participate in the creation of a community sculpture in the amphitheatre. The P&C are also selling drinks and ice creams. I'm thinking we've got all bases covered! Congratulations and thank you to Sally Gorey and her team of P&C helpers for putting this event together.

Lyn Beazley AO FTSE – is coming to our school!

Lyn Beazley is a neuroscientist and educator based in Perth, WA. She was the Chief Scientist of Western Australia from 2006 to 2013, a role that involved advising the Western Australian Government on science, innovation, and technology. In 2009, Beazley was awarded Officer of the Order of Australia. Later that same year, she was elected a Fellow of the Australian Academy of Technological Sciences and Engineering. In 2011, she was inducted into the inaugural Western Australian Women's Hall of Fame, followed by election as a Fellow of the Australian College of Educators and a Companion of Engineers Australia. She was the second recipient of the Governor's Award for Giving, in 2012.

In 2014, Beazley was inducted into the Western Australian Science Hall of Fame, and was appointed as Sir Walter Murdoch Distinguished Professor of Science at Murdoch University. In November 2014, Beazley received the Australian of the Year Award for 2015.

We are honoured to have Ms Beazley speaking to the students in years four to six on Thursday 25th of May.

NAPLAN

NAPLAN testing is complete for another year. I would like to congratulate the children on how well they managed this 'event' without stress or fuss. Results from this series of 'one test on one day' will come back to us later in the year and are used to assist us with future planning at both the individual and class level.

Walk to School Day

Dig out the umbrellas, it's Walk to School Day on Friday. Across the nation as many children as possible will be walking to school on Friday 19th May and being rewarded when they get their with breakfast. We'll see as many of you as possible for a breakfast sausage sizzle this Friday at 8.15am.

Question and Answer

Regularly, the Associate Principals and I are asked questions, either in person or by email, to which we believe the answer may be of interest to other members of our school community. I have decided to include these as a regular feature in the newsletter. I hope you find them informative.

Q How much is the fine for leaving a car unattended in the Kiss and Drive?

The Town of Cambridge Ranger has been assisting us daily to teach users of the Kiss and Drive how to do so in a safe way. After a few weeks of 'educational support' fines will be issued. The fine for leaving a car unattended in the Kiss and Drive is \$80.

Q Can I drop my child off early to school?

No. Children should not be on the school grounds before 8.25am unless they are here for an organised activity such as tennis, Uniactive, phonics groups or enrolled in the Before School Care Program offered by Camp Australia.

Q Why don't all the children sit on carpets at the assembly? Is this an occupational health and safety concern?

The large carpets we use in the assembly area are 'spare' carpets we have acquired from when the kindergarten and pre-primary classes were in transportable buildings a few years ago. We use them to designate an aisle and to assist the classes to sit in (relatively) straight lines. They are not an occupational health and safety requirement. At all other times, the children sit on the ground in the U/C area.

Q How do I enrol at West Leederville Primary School?

To enrol in Kindergarten or Pre-primary for 2018 parents are requested to complete an *Application for enrolment form* which is available on our website: [Kindergarten application](#) [Pre-primary application](#)

The closing date for submission of these forms for our 2018 program is July 21st, 2017.

To enrol in any other year level, Application for enrolment forms are available on our website. Once submitted, office staff will liaise with parents to arrange supporting documentation required to complete the enrolment.

All children enrolled in PP to Year 6 must live within our designated boundary. A map of our boundary can be found on the school website: www.wlps.wa.edu.au

Q I have heard that children are grouped for Maths at WLPS. How is this managed?

Three days per week an additional teacher is available for each phase of learning (combinations of year groups such as Years 3&4) during their mathematics block (all classes teaching mathematics at the same time). Teachers within these phases of learning decide how best to use this additional teaching resource to cater for their students. They may run an extension group, they may divide their cohort into smaller class sizes, they may run a remediation group. How this resource is used varies depending on the topic, the cohort and other factors as decided by the phase of learning teachers at their weekly planning meetings.

Warm regards,

Fiona Kelly

Dates for your Diary

18 May

Assembly: Year 2 White, 2.15am

18 May

Sculptures under the Tree, time 4pm to 7pm

19 May

National Walk to School Safely Day, sausage sizzle breakfast, PP area

23 May

Food Revolution Day, PP classes

24 May

National Simultaneous storytime

1 June

Assembly: Year 3/4, 2.15am

2 June

Staff PD- students do not attend school

5 June

Western Australia Day PD

6 to 9 June

Year 6 Camp to Forest Edge

7 June

Cross Country training, City Beach oval, 4pm to 5pm

12 June

WLPS Cross Country, Lake Monger, Yrs 1 to 6

14 June

Cross Country training, City Beach oval, 4pm to 5pm

15 June

Assembly: Year 2/3, 2.15am

16 June

Interschool Sport, Woodlands PS,

21 June

Interschool Cross Country, City Beach oval, Yrs 3 to 6

23 June

Interschool Sport, Churchlands PS,

23 June

P&C Quiz night

Please check the West Leederville Primary School Website or Mobile App for regular updates to the school planner.

WLPS P&C News

The P&C are excited to be working in collaboration with the school for the sculptures under the tree evening. We're sure it is going to be an amazing afternoon/evening. Personally, I have seen a few of the sculptures already as children and parents carry them carefully into the school hall and they look amazing! Well done to everyone!

We hope parents loved spending the time with their child or children, exploring, creating and enjoying each other's company, while producing a work of art!

We must remember to thank the parents and teachers who work behind the scenes organising the event. I'm sure there have been many hours dedicated. THANK YOU!

Other people we should say thank you to are the class representatives, coordinated by Kath Dawson. Kath has spent many years coordinating the class reps and does a great job collecting and distributing information. So THANK YOU to these amazing parents and Kath, for keeping the communication line open throughout our school. THANK YOU!

*Julie Metcalfe
P&C President*

WLPS Netball

WLPS's newest netball team, the year 3 Cygnets, hit the courts bright and early on Saturday 6 May for their first ever game. The girls were bursting with enthusiasm and quickly found their rhythm together as a team. One of our players, Sarah, couldn't make the first match, but made up for it with two amazing goals in our second game. Well done girls, and good luck for the season to all of our WLPS players.



2018 Enrolments
@ Mount Lawley Senior High School

Closing Date 23rd June

Please be aware that the closing date for
2018 enrolments is Friday the 23rd June.

Please visit The Mount Lawley Senior High School website for application forms or see the link attached below.

<https://www.lawley.wa.edu.au/view/choosing-lawley/year7-enrolments>

Edudance classes

As part of the Phys Ed curriculum program in Term 2, all of the students are participating in Edudance classes. This has become a greatly anticipated program for the students who enjoy a dance lesson each week, learning a dance routine that they can perform for their parents, students and teachers in a concert at the end of the term. This year there will be 2 concerts to accommodate all of our students and details of the concerts will be communicated to the parents as soon as they come to hand.

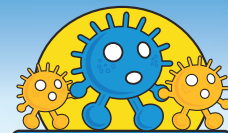


Walk Safely to School Day

Stroll, skip, dance or jog- no matter how West Leederville Primary School students make their way by foot to school tomorrow on Walk Safely to School Day, Friday May 19, they'll be making a positive difference to their health. Now in its 18th year, the annual community event organised by the Pedestrian Council of Australia encourages school children, their parents and carers to walk safely to school. WLPS students who participate in the Walk Safely to School Day tomorrow will be rewarded with a sausage sizzle breakfast under the tree.



**ACTIVE KIDS ARE
SMARTER KIDS**



**WALK SAFELY
TO SCHOOL DAY**

FRIDAY 19 MAY 2017



**Until they're ten, children must always hold
an adult's hand when crossing the road**

WALK.COM.AU



SUPPORTED BY THE AUSTRALIAN GOVERNMENT AND ALL STATE, TERRITORY AND LOCAL GOVERNMENTS

Village Library Project Movie Afternoon

The WLPS P&C and the Village Library Project present a Family Movie Afternoon on 11 June in the school hall.

The movie starts at **3pm**, followed by a sausage sizzle.

Queen of Katwe tells the heartwarming story of young girl in Uganda following her dreams of becoming a chess champion.

An alternate movie will be available for younger children.

Tickets \$8 individual, \$30 families from www.trybooking.com/QBMU.

Please bring a pillow or beanbag.

Family Movie Afternoon



Presented by the WLPS P&C and the Village Library Project



Based on a true story, Queen of Katwe follows a young girl in rural Uganda as she pursues her dream of becoming an international chess champion. Rated PG.

Alternate movie available for younger children.



The Essentials

11th of June
3:00pm Movie
5:00 Sausage Sizzle

WLPS Hall
Bring a beanbag or pillow

Tickets: \$8 individual
or \$30 family

www.trybooking.com/QBMU

For more information on the Village Library Project go to www.villagelibraryproject.com or contact Shae on 0412 647 787

We look forward to seeing you there!

STAR STUDENTS

The following students received Merit Certificates at the recent assembly.

Pre-primary

Frankie Simpson
Ethan Lewis
Theo Carmody
Lucas Metcalfe
Abigail Barker
Liam Leather

Year 1

Maxim Bull
Dylan Samanta
Sam Mitchell
Gabriel Zein
Declan Wong
Lena Pawlowitsch

Year 2

Emerson Lynch

Cohen Dunning

Elise Di Lollo
Ray Brodie-Hall
Phoebe Bowler
Taj Williams

Year 3

Rocco Zampogna
Guillaume Daoud
Luna Hoshino
Jack Earley

Year 4

Sienna Hathrill
Fred Keane

Year 5

Juliette Mandin
Harry Sanders
Will Duplock
Olivia Butler

Year 6

Aoibhean Dhepnorrarat
Jack Buckels
Sullivan Moody
Harry Hopwood

Congratulations to our Star Students.



Prize winners in MILO T20 Blast

Last term, WLPS entered several teams of students in the MILO T20 Blast program. As part of the Perth Scorchers School Ambassador Program, silver and gold primary school ambassadors who achieved a minimum of 20 new participants registered to a club/community's MILO in2CRICKET and/or MILO T20 Blast Program were in the running for a \$1000 bonus reward. The prize was worked out as a percentage of the total school population based on the number of new participants that had registered from the school. This week it was announced that the metro winner of the \$1000 bonus reward as part of the 2016/17 Perth Scorchers School Ambassador Program is West Leederville PS (11.4%). Congratulations to all the students who participated in the program to put WLPS in the running for this wonderful prize.



Pictured above are some of the students who participated in the recent Perth Scorchers School Ambassador cricket program.

PP BLue Mothers Day morning tea

Mothers and grandmothers were invited into the Pre-primary Blue classroom for a Mothers' Day morning tea last week. The students had lots of activities in store for their visitors including painting fingernails, making necklaces, painting pictures together and a song performance. There were smiles all around as both students and their mothers enjoyed the morning tea.





Fact sheet

CYBER SAFETY top ten tips for youth

Follow us:  @ThinkUKnow_Aus  facebook.com/ThinkUKnowAustralia

The internet and mobile phones provide great ways to express yourself and communicate with others. It's important to make sure they're used responsibly so that everyone has an enjoyable online experience.

It's all about respecting yourself and others.

1. Use a **strong password**, a combination of upper and lower case letters, numbers and symbols, eg P@\$w0rd!
2. Use **secure web browsers**, those with https at the start of the URL and a padlock or other indication that it is secure, when sharing sensitive information.
3. Update your **operating system** regularly and make sure you have **antivirus** software installed on your computer and other devices – phones too!
4. Avoid opening or responding to emails from people you do not know and aren't expecting – They could contain a virus or malicious software.
5. Don't give out **private information** over the internet or mobile phones about you, your family and friends. Also think about what information might be contained in photos you share.
6. Only accept **friend requests** from people you know and trust. When it comes to friends and followers online it is not a popularity contest!
7. **Think before you post!** Once you've pressed 'Send' you can't get that back. Who might see that photo, video or comment? Where might it end up?
8. Make sure your social media accounts are set to **private or friends only!** Also make sure you check your privacy settings regularly as they can change without you knowing.
9. Tell your friends to ask for **your permission** before uploading or tagging you in a photo – Make sure you do the same!
10. Don't post **inappropriate or illegal** content - It is impossible to permanently delete digital content once it has been shared.

Most importantly, know where you can go for help! Speak to an adult you trust if something makes you feel uncomfortable online or on a mobile phone. You can also contact:

- Reach Out: www.reachout.com.au
- Bullying. No Way!: www.bullyingnoway.com.au
- Kids Helpline: 1800 55 1800
- Youth Beyond Blue: www.youthbeyondblue.com
- The **website, application or phone carrier** that you were using at the time



For more information visit www.thinkuknow.org.au

About School Banking

Get involved in the School Banking program.

West Leederville Primary School is excited to offer the Commonwealth Bank School Banking program to all students.

School Banking is a fun, interactive and engaging way for young Australians to learn about money and develop good savings habits. Children who deposit money into their Youthsaver account through School Banking earn Dollarmites tokens, which they can save up and redeem for exciting rewards.

The rewards available during 2017 are:

- Cyber Handball
- Colour Change Markers
- 3D Chalk Set
- Tablet Case
- Smiley Emoji Keyring
- Volt Handball
- Pencil + Tech Case
- Epic Earphones



School Banking is also a great fundraiser for our school. Our school receives \$5 when a student makes their first ever School Banking deposit and 5% on every deposit made through the school (to a maximum of \$10 per individual deposit).

Getting involved in School Banking is easy!

All you need to get involved in the School Banking program is a Commonwealth Bank Youthsaver account. You can open an account for your child in one of two ways:

1. Online

Visit commbank.com.au/schoolbanking and click on the link to open a Youthsaver account.

2. In branch

Visit a Commonwealth Bank branch with identification for yourself and your child, like a driver's licence and birth certificate.

If your child has an existing Commonwealth Bank Youthsaver account they can start banking straight away. They just need to bring their deposit in every week on School Banking day using their Dollarmites deposit wallet.

School Banking day is **Monday from 8.20am in the school hall.**

If you would like to know more about School Banking, please ask for a 2017 School Banking program information pack from the School Banking Team on Mondays in the school hall or visit commbank.com.au/schoolbanking