



## West Leederville Primary School

### Interschool Swimming Champions!



*Pictured above are our interschool swimming medal winners. Front from left, Camryn, Sienna and Felix. Behind from left, Keaton, Sean and Amelia. Jack was absent on the day of the photo. Below, Sienna pictured with her ribbons and medal.*

Congratulations to all the members of the West Leederville Primary interschool swimming team who were victorious at the interschool swimming carnival held at Claremont pool on Tuesday 4th April. The final overall points were:

1st	West Leederville PS	258
2nd	Marmion PS	217
3rd	North Beach PS	212

The victory marked the first time WLPS have won the swimming carnival in this division and demonstrated the overall improvement the school has made in this sport over the last few years.

All team members are to be commended on their commitment to before school swimming training, their outstanding sportsmanship and impressive performances in all the individual and relay swimming events.

A special mention goes to the following championship winners:

- Year 3 Champion Girl-Camryn Penn
- Year 3 Runner Up Boy-Felix Coley
- Year 4 Champion Girl-Sienna Hathrill
- Year 5 Champion Boy-Sean Flynn
- Year 5 Champion Girl-Amelia Goodacre-Paul
- Year 6 Runner up Girl-Keaton Penn
- Year 6 Runner up Boy-Jack Lubich



# From the Principal



Dear WLPS Community,

Term 1 draws to a close tomorrow. We wish all of our students and their families a very safe and happy Easter and holiday period. May I also take this opportunity to thank each and every staff member for a terrific term. We've done a lot and the school is running very smoothly.

Today we saw our first assembly with the northern doors of the undercover area pulled down. It was a little squeeze but we all survived. Next term and for part of Term 3, the squeeze will continue as the construction of our new second story addition to the library, music, art/science room takes place. Please see the Q&A around the construction project elsewhere in today's newsletter.

The staff has actively engaged with students around playground rules and consequences for breach of these over the last two weeks. We will continue the conversations into next term in the pursuit of sensible, respectful and safe behaviour by all students. This is especially important in this time of reduced playground areas.

Removalists have been on-site all week helping us pack the building and move items off site ready for handover from next Monday, April 10th. Please note, Camp Australia are now based in the school's hall.

Our recent school swimming carnivals have been very successful, culminating in a win for West Leederville Primary School at the interschool carnival on Tuesday. Our team pitted our skills against two very worthy opponents in North Beach and Marmion Primary Schools. Congratulations to the whole team on their success. We also congratulate our individual champions. Student talking is abuzz with even greater commitment for next year.

Our first two classes of Year 3 and 4 students having bike education has finished today. The students have gained a wealth of experience from Let's Ride. We look forward to the rest of the Year 3 and 4 students taking their turns in Terms 2 and 3.

Edu-Dance kicks off in Week 1 of next term. This annual event is always very popular with all students and I know parents love the concerts. This year we have our sessions every Wednesday and Friday.

Our annual ANZAC service will be held on Thursday, 27 April at 2pm in our undercover area. All family and community members are welcome. Three of the school's student councillors will represent us at the Town of Cambridge annual ANZAC parade and Remembrance ceremony at the West Leederville Memorial Gardens and Cenotaph on Cambridge St on April 25, from 7:50am where they will lay a wreath on behalf of the school.

Tomorrow is a free dress day for the school. Students have been asked for a gold coin donation for our sponsored school in Pelaga, Bali. Over the last few years, West Leederville Primary has done a lot to support the school. We have funded an electric pump and water tower to allow running water on the school site, a laptop computer and internet connection, sporting gear and library books. None of these things could have happened without your generous support.

Lauren Sherborne, Year 5 Blue, is away on long service leave for Term 2. We welcome a very capable teacher, Ali Cook, to the staff.

The P&C will be busy over the holiday period topping up the Pre-primary sandpit and putting up some chalkboards for the children. Thanks to all those that are involved in this project.

A reminder to parents to please keep an eye on their child/children's school-based accounts. Keeping a running record for each child ensures the smooth payment of funds to the school. Your attention to this is much appreciated, especially by the office staff.

Regards,

Michael McInerheney  
Acting Principal

# Mathematics Day



*Pictured above, Kai, Liam and Lewis experiment with blocks and gears; right, Bailey scores points with his beanbag; below left, Lucas and Jasper measure with water and below right, Harry makes patterns with stick and rocks.*

All of the students from Pre-primary to Year 6 celebrated all things mathematical in our Whole School Maths day held last Thursday, 30th March. The teachers devised activities and games illustrating the different strands of the Mathematics curriculum, adapting them to the different skill level for the age group of the students. The students were divided into groups and rotated around different activities which were held indoors and outdoors, spending 20 minutes at each station.

At the pre-primary level, students thoroughly enjoyed building with blocks and gears; measuring with water and sand; making patterns with nature items found around the Moreton Bay Fig tree and playing various games with numbers. The addition of Maths day to the WLPS school calendar has been embraced by the students and will continue as an annual event.



## Dates for your Diary

### 8 April

Last day of Term 1, 2017. Free dress day in aid of our Bali sister school.

### 24 April

**Staff PD- students do not attend school**

### 26 April

Term 2 commences for students

### 26 April

Matilda Musical excursion, Year 6, Burswood

### 27 April

ANZAC ceremony, 2pm, undercover area

### 4 May

Assembly: Year 5 Red, 2.15am

### 8 to 12 May

NAPLAN testing week

### 9 May

Kindergarten photos

### 12 May

Kindergarten photos

### 18 May

Assembly: Year 2 White, 2.15am

### 18 May

Sculptures under the Tree, time TBC

### 24 May

National Simultaneous storytime

### 18 May

Assembly: Year 3/4, 2.15am

### 2 June

**Staff PD- students do not attend school**

### 5 June

Western Australia Day PD

### 6 to 9 June

Year 6 Camp to Forest Edge

### 15 June

Assembly: Year 2/3, 2.15am

**Please check the West Leederville Primary School Website or Mobile App for regular updates to the school planner.**

## End of an Era

### No more footy parking after 1 April

To our loyal footy parking patrons:

Due to the amazing growth in our school, we will be adding another storey to the new library.

Construction will start soon and this means that the last footy parking we can offer will be the West Coast Eagles game on **Saturday 1 April 2017.**

Along with the move to the new stadium at Burswood, this will be the end of over twenty years of footy parking at West Leederville Primary School.

The parking has been run by the parents and all of the funds generated applied to various school projects and to top up education department shortfalls. Some of the many projects funded by your parking dollars have been;

A rope climbing structure; kindergarten adventure nature play area; early learning literacy packs; Mathletics and reading eggs – online licensing; main hall furniture; sports shades over the basketball court and books to supplement our library collection.

From the children and parents at the school, we sincerely thank you for your support in the past and wish you all the best for a premiership win this season.

Kind Regards,

West Leederville  
Primary School  
P&C



## Chaplain's corner

I can't believe how this term has flown by but am already looking forward to next term.

Term 2 will be jammed packed with a continuation of the new program started earlier this year and the return of the ever popular CRAFT CORNER!

Stay tuned for information and sign up sheets as places will be limited and this year I will be asking for a parent helper for each session.

Wishing everyone in the WLPS community a peaceful and restful Easter and holiday break.

Coralie Sala Tana  
Chaplain



Specialist  
Programs

SVAPA Enrolment Applications - Specialist Visual & Performing Arts  
@ Mount Lawley Senior High School

# Closing Date 7<sup>th</sup> April

Please be aware that the closing date for the  
2018 SVAPA program is next Friday the 7<sup>th</sup> April.

Please visit The Mount Lawley Senior High School website for application forms or see the link attached  
below.

<https://www.lawley.wa.edu.au/upload/pages/forms-svapa/svapa-2018-application.pdf?1490767302>

## STAR STUDENTS

The following students received Merit Certificates at the recent assembly.

### Pre-primary

Jianing Gong  
Peyton Penn  
Juan D'Addona  
Liam Ford  
Ayana Brandli  
Andreas Gasteviski

### Year 1

Remi Merenda  
Aila Steedman  
Francesca Anderson  
Einan Healy  
Eadie Mizzen  
Bennett Massie-Taylor

### Year 2

Bruce Campbell  
Sophie Etherington

Ludia Yun

Ruby Mizzen  
Brigitte Keyser  
Isabelle Devenish-Hooper

### Year 3

Hemali Manohar  
Ryley Adams  
Sofia Stinton  
Oscar Barker  
Kaylyn Boda  
Matthew Owen

### Year 4

Zyan Ng  
Charlie Buckels  
Ashley Knight  
Lily Peter

### Year 5

Amelia Goodacre-Paul  
Sean Flynn  
Jordan Karagania  
Mia Marr

### Year 6

Innes Raeburn  
Rohan Raby  
Alisa McDonnell  
Oliver Reid

Congratulations to our Star  
Students.



# Water Fun Day



Last Wednesday, 30th March it was the turn of students from Years 1 & 2 to travel to the swimming pool for their Water Fun Day. Set up as a tabloid, the students took turns in participating in games both in and out of the pool. This is always an enjoyable day for our junior students and our appreciation is extended to those parents who attended and assisted with the various activities on the day.



## P&C News

Myself and the rest of the P&C committee would like to say a big thank you to everyone who contributed their time and effort last year.

Special thanks to Andrew Bailey -previous president, Clayton Joyce- previous treasurer, Kate Sinfield- fundraising coordinator, Marisa Ballatoni- entertainment book coordinator and Naomi Wallace- scholastics coordinator. These people in particular have contributed many hours to help provide support and raise funds for our wonderful school. Thank you for all your hard work over the years.

We would like welcome on board; vivi Constantine as the new treasurer, Sarah Williams as the new fundraising coordinator, Michelle Emmett as the new entertainment book coordinator and Helen Whitty as the new scholastics coordinator. We thank you for offering to give up your time to help our school and the community.

Warm wishes for a restful and fun school holidays.

Jules Metcalf  
P&C President

## Band Opportunity



Students of WLPS who play wind and brass instruments are welcome to audition for the band at Mt Hawthorn PS. Pictured left are Alex and Olivia who currently play with the band.

## Nutrition Tips

From the Good Food for Me Team

### Have A Second Think About Cola Drinks

Cola drinks have a very high sugar content, which can lead to dental decay and can lead to increased weight in your child.

Cola drinks also contain caffeine, which can increase their chance of becoming dehydrated especially during sporting activity.



Instead try choosing:

- ✓ Water as a drink.
- ✓ Low fat milk.
- 100% fruit juice (diluted 50:50 ratio to water, to save you money).
- ✓ Non caffeine low joule soft drinks (not an everyday drink).
- ✓ Low joule cordial.



For more information:  
<http://www.chw.cdu.au/parent/factsheets>



# **West Leederville Primary School**

## **New Building (NB) Q&A**



### **What is the building project?**

The new building (NB) is a second storey addition put onto the entire library, music, art/science building.

### **What does the NB provide us with?**

The NB provides 5 classrooms and a staff room.

### **Who will use the building/what classes will be housed the building?**

The two Year 6 and two Year 5 classes will move into the NB upon completion, whilst allowing for future expansion due to our growing population.

### **When does the NB commence?**

The builder will take possession of the site on April 10.

### **How long will the NB take?**

The building is expected to take 18 weeks and be completed by August 11.

### **How much space will be lost to the school during the building process?**

The map shows the extent of loss. The red line is the boundary fence between the builder's yard and the school ground.

### **What happens to the library, music and art/science rooms while the build is taking place?**

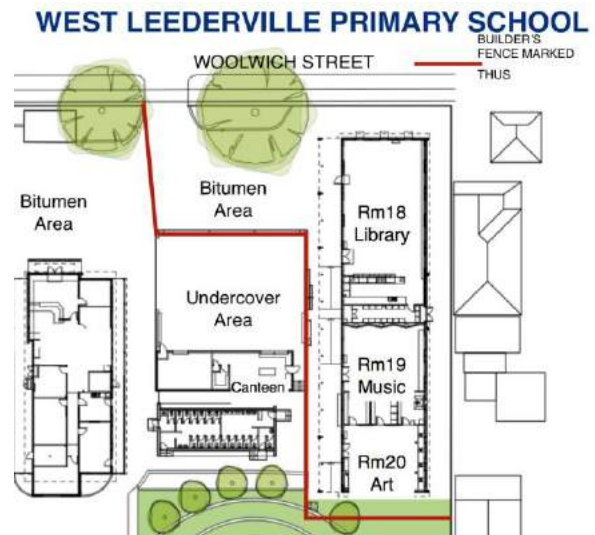
The building is closed throughout the duration of the build and is completely off limits. Teachers will take lots of books and keep them in their classrooms, so as not to deprive students of reading and resource materials. Students will still be able to borrow books. They will borrow them via their teacher and not via the library.

### **Where do the specialist art, drama and music teachers hold their classes while the building takes place?**

The specialist teachers will take their classes either in classrooms or at the church hall at St Barnabas Church, Woolwich St.

### **Can we use the undercover area and bitumen area in front of it, during the build?**

The school can still use the undercover area while building is taking place. The roller doors on the northern side will be locked down and not be able to be raised. The bitumen area directly north of the undercover area will be fenced off and will be used by the builder as a storage and vehicle access area. The eastern side of the undercover area will have a barrier installed to avoid any contact/injury.



### **Will the school have access via the double gates on Woolwich St?**

The school will not have access to the entry on Woolwich St, except in the case of an emergency, where vehicle access is absolutely necessary.

### **Who do I inform if I see something relating to the NB construction that may impact the safety of the school?**

Please let the school administration staff know immediately.

### **Can the school assemblies still go ahead during the building program?**

Yes, the builder has been made aware that the school runs assemblies each fortnight. The space for assemblies will be somewhat smaller.

### **Will the school canteen be affected?**

No, the canteen will still operate three days per week, Monday, Wednesday and Friday.

### **Will parking for extracurricular activities, such as football parking, church parking be able to take place?**

No, the Woolwich Street entrance will not be accessible, except in school emergencies.

### **Will the NB mean that kindergarten students will be able to come back on the main school site?**

No, the building program does not include access to the main school site for kindergarten students.

### **What happens to Camp Australia Before and After School Care?**

Camp Australia is able to work from the main school hall, with cooking done in a prep room. (Harmony Room)

### **Will Uni-Active and other extra-curricular activities still take place?**

Yes, all groups have been made aware of the NB and have assured us that they are able to cope with any adjustments needed to space during the time.

### **Is there an art component to this build? If so, why?**

Yes, government policy states that one percent of any government build must be spent on public art. The art for our project will be functional as well as fulfilling this quota. Paula Hart is the artist engaged for the project. Paula has worked with us previously on our ECE building. Paula has again collaborated with our students and designed an enclosure for the stairwell that will be both beautiful as well as servicing a practical need.

### **As a parent of a child or children at West Leederville Primary School, how can I help?**

Please be mindful of the extra pressure put on parking near the school. There will be extra traffic. Try to have students walk, ride their bike/scooter or car pool. We already have a high percentage of students walking and riding to school. Let's make it even better. Exercise extra patience around drop off and pick up. Smile a lot. Every little bit will help.





Fact sheet

## FACEBOOK (For parents)

Follow us:



@ThinkUKnow\_Aus



facebook.com/ThinkUKnowAustralia



### What is Facebook?

Facebook is a free social networking site that allows users to create profiles, upload, share and view photos and videos and send messages. The site allows users who have common interests to interact, create and manage events and live chat with their online contacts, or 'Friends'. Facebook is restricted to users aged 13-years-old and above, however some users may lie about their age to join.

### What devices can access Facebook?

Facebook can be accessed on any device that has an internet connection such as mobile phones, tablets and computers. It can be accessed via the Facebook website or through one of two apps, the generic Facebook app which includes all of Facebook's features except private messaging, and Facebook's 'Messenger' app which is used for private messaging.

### Who can young people interact with when on Facebook?

Facebook users have the ability to interact with a wide range of individuals. Through Facebook's news feed users have the ability to interact in public conversations, with people who are not Friends.

### What are the potential challenges with Facebook?

As with any form of social media, there are some challenges that young people may face when using Facebook. These can include online grooming (when an adult makes online contact with someone under the age of 16 with the intention of engaging in a sexual relationship) or cyberbullying and harassment. Other challenges include privacy concerns, such as revealing too much personal information on Facebook, reputation management or falling victim to scams shared through social networking sites.

### What are the recommended privacy settings?

By maintaining strong privacy settings, users can limit the amount of information shared with strangers. When setting up privacy features on Facebook there are three options:

- **Public** - any Facebook user to can view personal content and interact with your child.
- **Friends of Friends** - allows Friends and their Friends to view and interact with your child and their content.

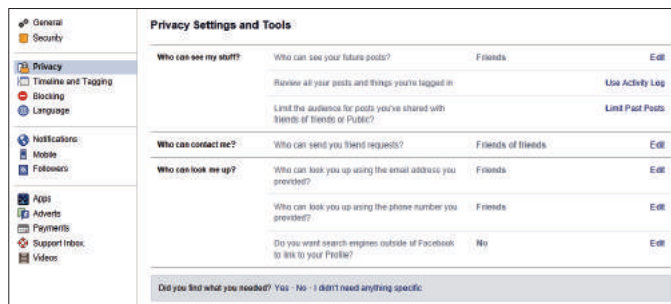
- **Friends** - only accepted Friends can see your content in the first instance. The Friends option is the safest way to ensure that you are sharing information with people you know and trust, but should not be considered as 100 per cent private.

There is also the ability to change the privacy options for individual posts.

### How do you manage Facebook privacy settings?

It may be easier to change privacy settings on a computer rather than a mobile device. To manage your privacy on Facebook (on a computer), access the privacy settings by clicking on the downward facing arrow in the upper right-hand side of the page and select 'Settings'. In the left hand column, click on 'Privacy'.

To access these settings on a mobile device select the 'More' tab. Scroll down to the **Help & Settings** section and select 'Account Settings' and then 'Privacy'.



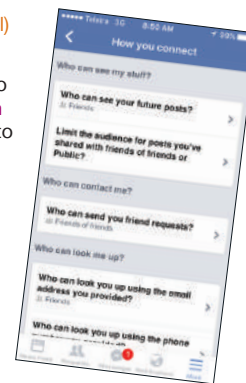
Here you can change a number of settings:

#### Restricting who can see a timeline (wall)

Under the 'Who can see my stuff?' section, you can manage who is able to access your timeline. Next to 'Who can see your future posts?', click on 'Edit' to ensure that 'Friends' is selected.

#### Restricting who can contact me

Under the 'Who can contact me?' section, you can manage who is able to send you Facebook requests. Next to 'Who can contact me?', click on the 'Who can send you friend requests?' and select the appropriate setting.





Fact sheet

# FACEBOOK (For parents)

Follow us:



@ThinkUKnow\_Aus



facebook.com/ThinkUKnowAustralia

## Restricting who can see your email address and mobile number

Under the 'Who can look me up' section, you can manage who can see your email address and phone number if you have provided one.

Next to 'Who can look you up using the email address you've provided?', click on 'Edit' and select either 'Friends' or 'Friends of Friends'. Click on 'Edit' next to 'Who can look you up using the phone number you provided?' and select either 'Friends' or 'Friends of Friends'.

## Restricting a Facebook profile being searchable

Under to 'Who can look me up' section, you can manage if your Facebook page will show up in search engine searches such as Google. The 'Do you want other search engines to link to you timeline?' option should be set to 'no' and can be switched to 'yes' by sharing your timeline with everyone.

## How do you block offensive users?

You can block offensive users on Facebook by selecting the 'Block' option on their timeline, or by accessing the **Blocking** page through Facebook's **Account Settings**.

To block a user, access their profile and select the 'More' option (signified by three dots) next to the 'Message' option on or under the person's cover photo. In the menu which appears, select the 'Block' option.

A dialog box will appear which provides options for dealing with the offensive user. This box will have different options depending on whether this person is already your friend. Select the 'Block' option to block the user.

Blocking a user will stop them from seeing your posts, tagging you, inviting you to events or groups, messaging you and adding you as a friend. If you are already friends, blocking a user will also unfriend him/her.

If you wish to report inappropriate content to Facebook you will need to do this before you block the user.

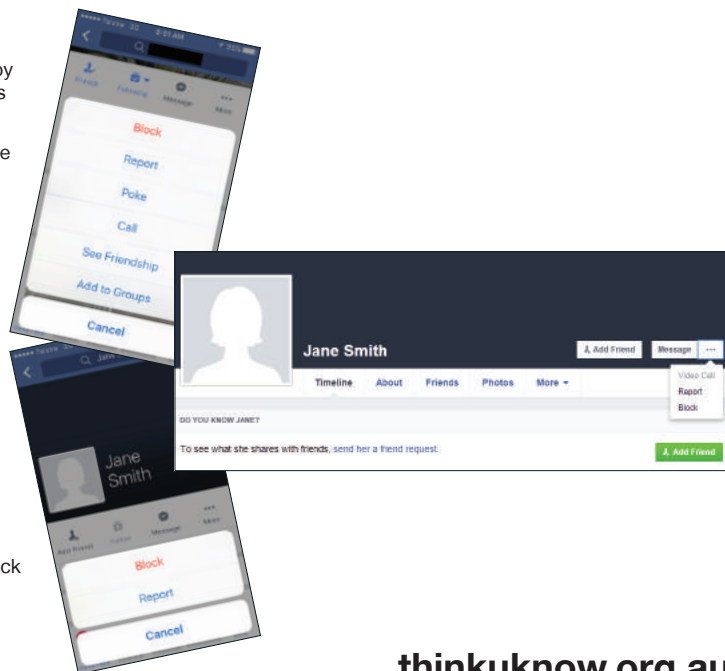
## How do you report users or fake profiles?

To report a user or a fake profile on Facebook, access the profile's timeline and select the 'More' option (signified by three dots) next to the 'Message' option on or under the person's cover photo. In the menu which appears, select the 'Report' option.

In the corresponding dialog box, select 'Report this account' and then select the reason you wish to report the account. Follow the prompts to finalise your report.

## More information

For more information, visit [www.facebook.com/help](http://www.facebook.com/help)



[thinkuknow.org.au](http://thinkuknow.org.au)

